

## Swivel clamp connector bases

Aluminium

### SPECIFICATION

Aluminium

- matt, tumbled finish **MT**
- anodized, black **ELS**

### INFORMATION

Swivel clamp connector bases GN 485 can be combined with swivel clamp mountings GN 482 (see page 1890), T-swivel clamp mountings GN 483 (see page 1891) and attachment clamp mountings GN 484 (see page 1892) with the same k dimensions into swivel clamp mounting joints. Clamping kits GN 511.1 (see page 1894) with screw (type S) and adjustable hand lever (type K) are available to connect the joints and bases (code no. for ordering is shown in the dimensional table).

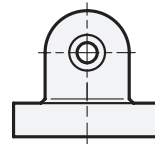
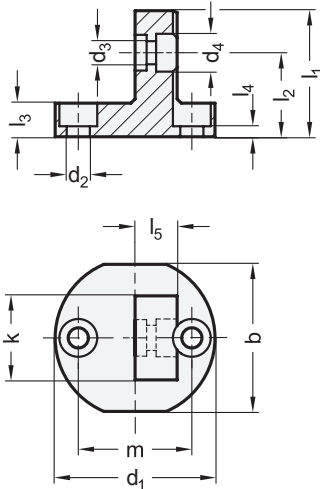
The center to center mounting hole distance m of the swivel clamp connector bases GN 485 matches the base plate clamp mountings GN 473 (see page 1878), clamp mountings GN 477 (see page 1879), flanged bolts GN 480 (see page 1885) as well as retaining magnets GN 51.6 (see page 2032).

### TECHNICAL INFORMATION

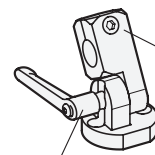
- Stainless Steel characteristics (see page A26)

### ACCESSORY

- Clamping kits GN 511.1 (see page 2032)



Clamping kit  
GN 511.1, Type S



Clamping kit  
GN 511.1, Type K

Swivel clamp mounting joint  
with swivel clamp mounting  
GN 482

### GN 485

Description	k	b	d1	d2	d3	d4	l1	l2	l3	l4	l5	m	Clamping kits for d3		⚖
													Type K	Type S	
GN 485-16-MT	16	29	31.5	M 4	4.5	7.5	25	17	7	3	8	22	GN 511.1-M4-16-K	GN 511.1-M4-16-S	18
GN 485-20-MT	20	35	38	M 5	5.5	9	30	20	8	2.5	10	27	GN 511.1-M5-20-K	GN 511.1-M5-20-S	31
GN 485-25-MT	25	41	45	M 6	6.5	10.5	37	24.5	10	4	12.5	32	GN 511.1-M6-25-K	GN 511.1-M6-25-S	55
GN 485-30-MT	30	44	50	M 6	6.5	10.5	44.5	29.5	12.5	6.5	15	36	GN 511.1-M6-30-K	GN 511.1-M6-30-S	90
GN 485-16-ELS	16	29	31.5	M 4	4.5	7.5	25	17	7	3	8	22	GN 511.1-M4-16-K	GN 511.1-M4-16-S	20
GN 485-20-ELS	20	35	38	M 5	5.5	9	30	20	8	2.5	10	27	GN 511.1-M5-20-K	GN 511.1-M5-20-S	33
GN 485-25-ELS	25	41	45	M 6	6.5	10.5	37	24.5	10	4	12.5	32	GN 511.1-M6-25-K	GN 511.1-M6-25-S	57
GN 485-30-ELS	30	44	50	M 6	6.5	10.5	44.5	29.5	12.5	6.5	15	36	GN 511.1-M6-30-K	GN 511.1-M6-30-S	92

